

# ORIENTATION FOR LEO MEMBERS

## WHAT IS “LEO”?

LEO is a programme of The International Association of Lions Clubs.

## PART 1 – BACKGROUND

### WHAT IS “THE INTERNATIONAL ASSOCIATION OF LIONS CLUBS”?

Community Service Clubs Grouped Under an International Organization

‘The International Association of Lions Clubs ®’

In short

‘Lions Clubs International ®’ or ‘Lions International’

The world largest service organisation with

MOTTO: WE SERVE

EMBLEM: L : *Law, Liberty, Labor, Loyalty, Love, Life & Lions*

Circle Surrounding L : *ONE United Body for Lions*

LIONS : *Name and Slogan of the Organization*

INTERNATIONAL : *An International Organization*

Two Lion Profiles Facing Away From Center : *Proud of the Past and Confident of the Future, & Looking in All Directions for Services to the Community*

THE SLOGAN: L - *Liberty*, I - *Intelligence*, O - *Our*, N - *Nation's*, S - *Safety*

### WHO ARE MEMBERS OF “LIONS CLUBS INTERNATIONAL ®”?

Over 45,000 Lions Clubs in 200 countries or geographical areas in the world.

### WHO ARE MEMBERS OF “LIONS CLUB”?

They are 1.3 million volunteer men and women believe and commit that by working together they will accomplish far more than would be possible as individuals and therefore, grouped under Lions Clubs, where they enjoy fellowship, develop their leadership capacities, and dedicate part of their free time to help those in need all over the world, while making their individual communities a better place to live in. They are called “Lions” and practising a common philosophy called “LIONISM”.

### WHAT ARE IMPORTANT ELEMENTS MAKE UP “LIONISM”?

- 🌐 Lions International Purposes
- 🌐 Lions Code of Ethics
- 🌐 Mission Statement

## PART 2 – LEO CLUB

### NOW, WHAT IS LEO PROGRAMME?

Lions club can provide training of youth by forming LEO clubs in local schools or community and continuously sponsoring it.

### WHAT IS A LEO CLUB?

A Leo club is a group of young people banded together to promote service activities especially among the youths.

A Leo club must be sponsored by a Lions club, which take this programme as one of their activities for the youth. The Lions club has to pay US\$100 to LCI to form a LEO club, after which the Lions club will pay a levy of US\$90 yearly to LCI.

### BRIEF HISTORY

The first Leo club was formed in Abington High School, Pennsylvania, USA in 1957.

Lions Clubs International officially adopted the Leo club program as an activity of the Lions clubs in 1967.

Total world population of Leo 140,000

The first club formed in Malaysia was the Anderson High School in Ipoh on 2<sup>nd</sup> September 1970.

Total population of Leo in Malaysia Peninsular is 9,800 where District B2 has 5,100 and District 308 B1 has 4,700.

## TYPE OF LEO CLUBS

LEO clubs can be in two classifications:

1. Alpha Leo club, members are Leos from the school ages from 14-18 years old.
2. Omega Leo club, members are Leos ages 18-28 years old.

Each Leo club has a Leo Advisor who is appointed by the sponsoring Lions club. The Leo Advisor encourages, guides and helps the Leos in every way possible in line with the policies of LEO programme. In the case of a school-based, a teacher from the school acts as Faculty Advisor working hand-in-hand with the Leo Advisor.

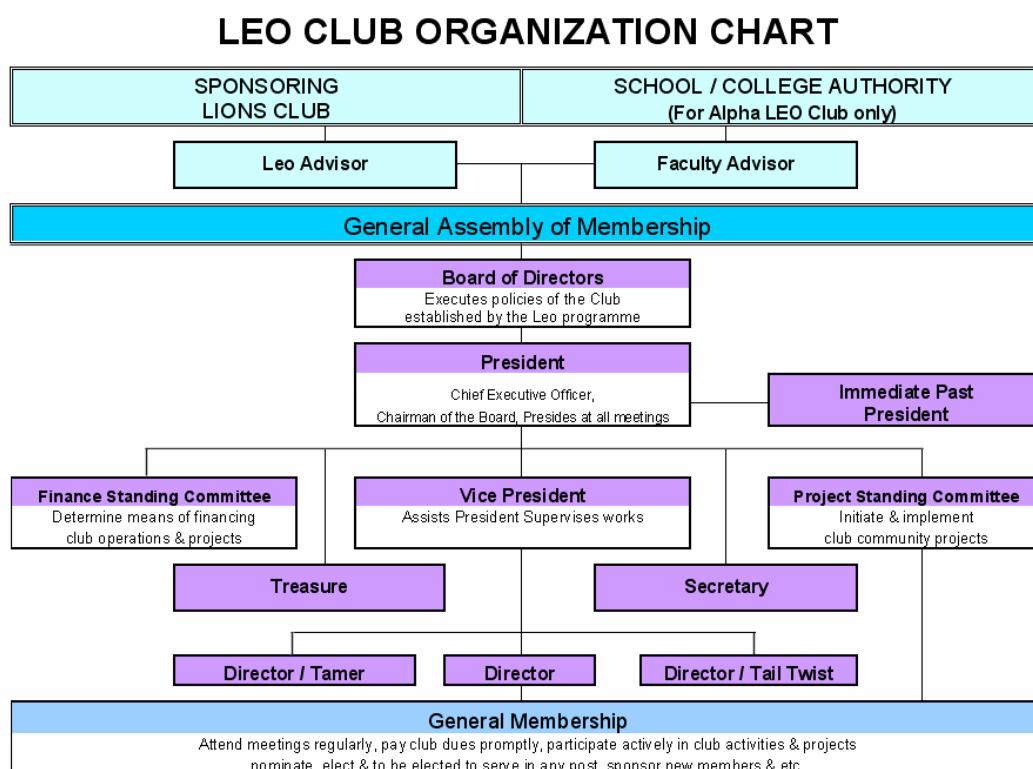
## WHAT IS THE OBJECT OF A LEO CLUB?

The object is to provide the youth of the world an opportunity for development and contribution, individually and collectively as responsible members of the local, national and international community.

## WHAT IS THE PURPOSE OF LEO CLUB?

Leo club has being formed with a purpose to promote services activities among the youth of the communities which will develop the individual qualities of LEADERSHIP, EXPERIENCE and OPPORTUNITY’.

## LEO ORGANISATION CHART



## WHAT DOES “LEO” SIGNIFY?

**L – E – O**

Leadership – Experience - Opportunity

## LEO EMBLEM

The emblem of the Leo Club consists of two gold Lion’s head facing outward from each other, divided by a vertical maroon bar with the letters LEO in gold from top to bottom. The emblem is highly significant. It represents Leos looking in all directions for opportunities to give unselfish services. Symbolically, the lion faces past and future – proud of the past and confident of the future.

## THE COLOURS: MAROON AND GOLD

- Maroon stands for loyalty to country, friends, to one’s self and integrity to mind and heart. Also for strength, courage and tireless dedication to a cause.
- Gold symbolises sincerity of purpose, liberality in judgement, purity in life and generosity in mind, heart and purse to those in need.

## PART 3 - LEO

### WHO CAN BECOME LEO?

If you...

- Are between the ages of 14 years to 28 years (Male or female) and of good moral character.
- Care enough to serve the less fortunate and those in need.
- Are willing to work to eradicate illiteracy and hunger.
- Have the vision to see another's problem, and the heart to care about it.
- Want to make the society a better, safer and cleaner place to live in.
- Prepare to participate in the programmes of the Leo club

### LEO MEMBERSHIP - OATH

"I take on this solemn obligation to abide by the constitution and bylaws of the Club to attend all meetings regularly to support and further the interests of the Club in all its undertaking and to contribute my fair share towards the financial support of the Club. I further declare that I will assist in maintaining building and strengthening the membership of the Club by actively serving in committees and in other capacities where my efforts are needed and finally that I will develop in myself those qualities of cheerfulness, service and loyalty which should characterize a Leo Club member at all times."

### LEO PLEDGE

"I pledge of my hands, extended and open, to help those in need.

I pledge of my heart, reach for it and it will be touched.

I pledge of my ears, to hear another's outcry

My eyes, to see the plights of others

My knowledge, to bring a man closer to his dreams

I pledge myself, for the betterment of my community and my country."

## PART 4 - LEO ACTIVITIES

### WHAT DOES A LEO CLUB DO?

- Besides carrying out its own administrative work, board meetings, regular meetings, the club also carry out projects and activities and they should be important to the membership, to the beneficiaries and to the community.
- LCI encourages Alpha Leo clubs to concentrate on the following:  
Character Development - Team building - Community service in an education context
- LCI encourages Omega Leo clubs to concentrate on the following:  
Professional Development - Leadership Skills - International Contacts - Community service  
District 308 B2 provides the continuous Leo development programme for the Leo clubs to participate.

### LIONS / LEOS BOND

Lions educate, supervise and organise seminars for Leos

Lions provide proper guidance and counsel to Leos

Leos to participate in Lions projects and activities

Leos invite lions to participate or attend Leo activities

Leos to send regular reports to the Leo Advisor and the District office.

Leos to plan and complete projects and report to Leo Advisor, LCI and District office.

Leos to operate the club within the policies and guidelines of LCI.

### GUIDES TO ACTIVITIES

#### Health Services

- Blood donation
- Awareness and Prevention of diseases e.g. diabetes, glaucoma, health screening, etc.
- Health screening

#### Educational Services

- Organise vocational training programmes
- Career guidance course
- Give study awards to needy and deserving students
- Cultural Activities

## **Social Services**

- Visit welfare homes regularly
- Collect used toys, magazines, for the less fortunate children
- Provide needy people or disaster victims with aid in food, clothing and medicines.

## **Public Services**

- Organise Road-Safety campaign
- Promote anti-vandalism campaign
- Construct bus stop shelters in needy areas

## **Recreational Services**

- Organise a sports meet or picnics for the handicap or the elderly.

## **Environmental Service**

- Organise a beautification programme
- Organise tree planting
- Recycle facilities
- Organise clean up

## **International Services**

- Participate in or sponsor a youth exchange programme
- Attend a Leo forum, international youth camp or international club twinning
- Exchange club newsletter with other Leo clubs.

## **Fund-Raising activities**

- Jumbo sales, food sales
- Walkathon, Jonathon, climbathon

# 青少獅入門

## 第一節 - “LEO”

### 什么是 LEO ?

國際獅子會的一個項目 - 青少獅會

### 國際獅子會是什么組織？

社區服務世界性民間自願團體

### 誰是國際獅子會成員？

超過 4,500 個獅子會分佈在 200 個國家或地區

### 誰是獅子會成員？

他們是一百三十萬自願人士，相信和承諾在互相團結合作下，可以完成各自所不能完成的服務事業。他們在獅子會組織下，獻出他們部份空閒時間，去援助世界上的不幸人士。在此同時，享受彼此的友誼，增進領導能力。並且加強美化本身所居住的環境變得更完善。他們被稱為“獅友”所導循的是“獅子主義”。

### 什么是獅子主義的最重要的元素？

1. 國際獅子會六大宗旨
2. 獅友八大信條
3. 獅子會任務宣言

## 第二節 - LEO Club 青少獅會

### 什么是 LEO Programme “青少獅”計劃項目？

獅子會可以為提供青年培訓在本社區的學校裡或本社區裡組織青少獅會和保持贊助其發展。

## 什么是青少獅會？

青少獅會由一群青少年組成主要是為同輩提供服務。

青少獅會必須由獅子會贊助而成為這個獅子會的活動項目之一

這個獅子會必須向國際獅子會交付美金 100 元。往後每年向國際獅子會交付美金 90 元的年捐。

## 青少獅會簡史

- 🌐 世界上第一個青少獅會 Leo Club of Abington High School 在 1957 年,成立於美國 Pennsylvania 州
- 🌐 國際獅子會在 1967 年正式宣佈青少獅會為國際獅子會的服務項目之一。
- 🌐 全世界青少獅人口為 140,000
- 🌐 馬來西亞第一個青少獅會 Leo Club of Anderson High School 在 1970 年九月二日成立於霹靂州怡保市
- 🌐 馬來西亞半島有 9,800 青少獅; 308 B2 區有 5,100; 308 B1 區有 4,700

## 青少獅會的種類

有兩種

1. 少獅會，成員為在籍學生，年齡在 14 至 18
2. 青獅會，成員為社區內的優秀青年，年齡在 19 至 28

獅子會在成立青少獅會後必須委任一位 Leo Advisor 青少獅導師。其責任是根據國際獅子會的青少獅會政策，盡可能在各方面鼓勵，指導和協助其所成立的青少獅會的發展。

在校內的少獅會，校方必須委任一位老師為少獅會校方導師和少獅導師共同指導和協助少獅會的發展。

## 青少獅會的宗旨

為全世界的青少年提供發展成為有責任感的新生代。為本社區、國家和國際社會作出貢獻。

## 青少獅會的目標

成立青少獅會提倡和鼓勵青少年踴躍參與服務活動，發展成為有領導才能，豐富經驗和能把握機會的有為青年。

## 青少獅會的組織結構

贊助獅子會 學校/大專 青少獅導 校方導師 會員大會 會長 副會長 卸任會長 財務委員會 計劃項目委員會 秘書 財政 理事會 總務 連絡 根據獅子會的青少獅會計劃的政策執行會務 協助會長監督工作 首席執行員 會議主席決定行政和計劃項目開銷 擬定和執行社區服務計劃項目

## LEO 代表什麼意義？

L – Leadership 領導才能

E – Experience 豐富經驗

O – Opportunity 把握機會

把握機會，豐富其經驗和培養其領導才能。

## LEO 徽章

中央 LEO 代表: L – Leadership 領導才能, E – Experience 豐富經驗, O – Opportunity 把握機會

兩個獅首向左右兩方代表：

🌐 對以往的成就感到驕傲;對未來的發展深俱信心。

🌐 向社區各方尋找服務的機會。

## 顏色

Maroon 栗色代表：Loyalty & Integrity 忠誠和正直

### 第三節 - LEO 青少獅

#### 誰可以成為青獅或少獅？

如果你是：

- 年齡在 14 至 28 歲, 品性良好
- 有同情心, 濟弱扶貧

你能：

- 貢獻精力, 助教授饑
- 竭盡所能, 樂於助人

#### 青少獅入會宣誓

“我謹此嚴肅誓言：奠守本會章程和規則，樂於出席所有會議，支持和增進會務，盡行對本會的財經義務。我將盡力為建設本會而服務，並加強本身修養以附合成為一位有高素質、樂觀、真誠服務的青少獅會的會員。”

#### 青少獅的承諾

提高我灵敏的雙耳，傾聽怨聲。

张开我警覺的雙眼，巡察苦難。

伸展我熱情的雙手，濟弱扶貧。

展現我真誠的熱心，慈悲為懷。

謹用我歉虛的智慧，助人完夢。

隨時隨處盡我所能，貢獻國家。

- 浩然編譯 -

### 第四節 - 青少獅活動

#### 青少獅會從事些什么？

- 🌐 領導才能培訓和社區服務。
- 🌐 國際獅子會鼓勵少獅會注重在教育領域裡 性個培養, 團隊精神和社區服務
- 🌐 國際獅子會鼓勵青獅會注重在專業領域裡 加強專業修養, 領導才能培訓, 國際交流和社區服務
- 🌐 308 B2 區會提供 continuous Leo development programme 青少獅延伸培訓計劃

#### 獅子會與青少獅會同工合作

除了執行行政會議、集會和正常會務活動包括為會友和社區服務。

獅子會為青少獅提供教育性的培訓講座會

獅子會為青少獅提供指導和諮詢

青少獅參於獅子會的項目和活動

青少獅邀請獅子會參於青少獅會的活動

青少獅向青少獅導獅和獅子區會承交常月報告。

青少獅向青少獅導獅、獅子區會和國際獅子會承交計劃項目和所完成的服務報告。

#### 青少獅會的一般服務項目：

教育

- 🌐 尊師重道
- 🌐 就業輔導
- 🌐 假期訓練
- 🌐 文藝活動

## 保健

- 預防疾病和體檢
- 捐血運動

## 視力第一

- 驗眼及護眼
- 眼科手術(白內障、眼角膜)
- 贊助盲人

## 糖尿醒覺

- 糖尿病資料展
- 驗血體檢
- 醒覺教育

## 社會福利

- 協助身體殘障或智障或年老無依人士
- 捐助不幸人士之設備
- 舉辦關懷病、殘、孤、寡活動

## 環保

- 環境保護運動
- 資源循環利用
- 種樹活動
- 野生物保護
- 清潔沙灘運動

## 青年關注

- 祛除毒品運動
- 預防問題青年
- 假期就業輔導
- 青年康樂活動
- 生活營

## 大眾

- 道路安全
- 家庭安全
- 學校安全

## 國際合作

- 青年交換
- 參於同國際青獅會論壇，青年營，青獅會結盟
- 交換會訊和工作經驗

## 籌款活動

- 清貨大促銷
- 園遊會
- 競走
- 尋寶賽
- 資源回收

暫時到此為止 謝謝參予